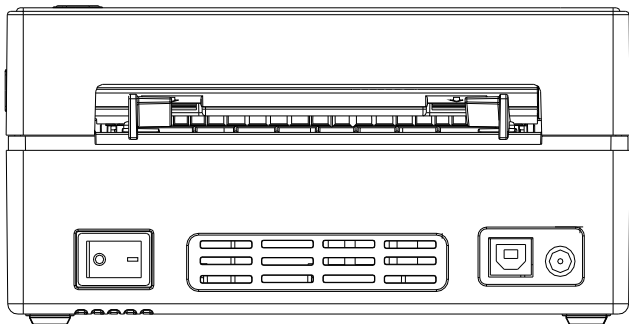
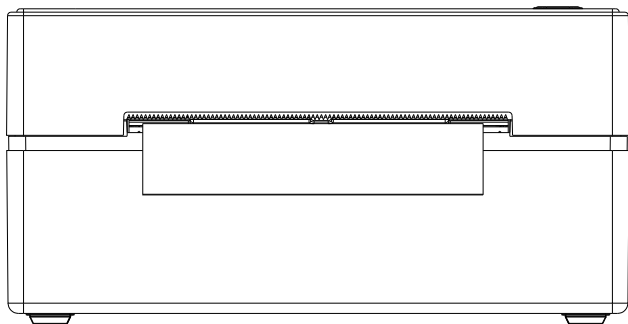


Logistics Label Printer

> USER GUIDE



## 1 Packing List

---

After unpacking, check whether the product appearance is intact and check all accessories. If there is any defect, please contact the distributor.



The printer



Power



Adapter



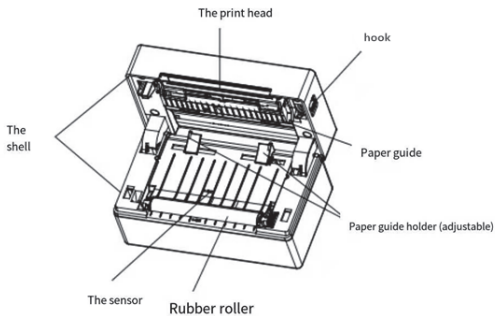
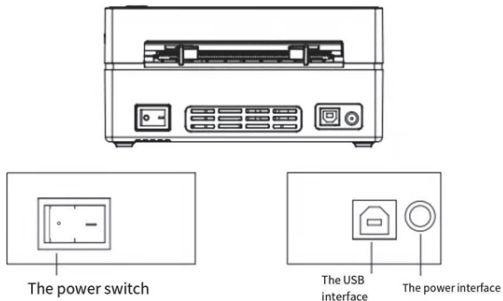
Operating instruction



USB Cabel

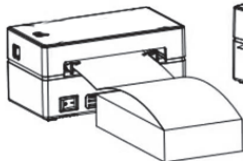
## 2 Appearance and components

---

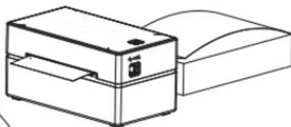


### 3 Install the paper roll

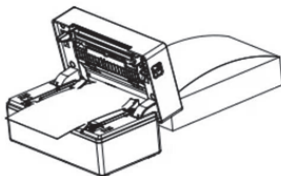
1. Place the paper in the back of the machine and the paper in the middle of the paper guide holder.



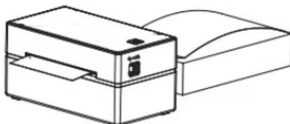
2. Face the front of the machine, open the top cover button according to the direction indicated by the arrow, and lift the top cover upward.



3 pull out part of the paper through the guide frame, according to the paper size of the guide frame to fix both sides of the paper.



4. Press down until the top cap snaps to lock.  
Tear off excess paper in the direction of the sheet.



# OVERVIEW

Congratulations on your purchase.

This is engineered for real-time and batch label printing to streamline your shipping process.

This is a thermal printer and does not require any ink or toner. Prints will be made by instantly heating compatible labels.

- > Please take a moment to thoroughly review this user guide as incorrect operation may result in property damage or injury.

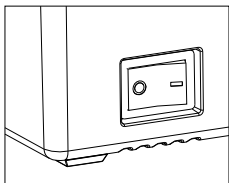
## WARNING

Printer head (TPH) may be very hot.

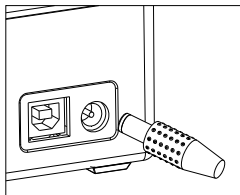
Please do not touch the printer head or parts around it after printing.

See additional safety notices on Page 22 .

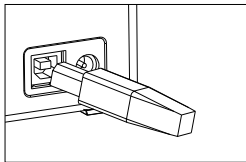
# QUICK START



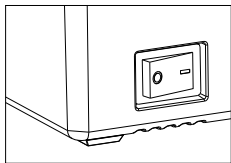
**1. Ensure the printer is OFF**



**2. Connect the power cable**



**3. Connect the USB cable**



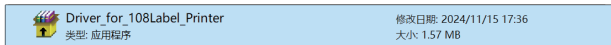
**4. Turn the power ON**

**> Continue to Driver Installation**

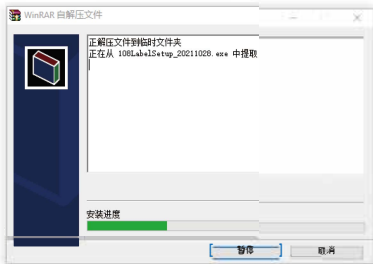
# Windows - Printer driver installation

Note: Before installing the driver, the printer needs to be connected to the power supply and computer, and the power on state.

Download the installation file (<https://www.luckjingle.com/driver-Detail?id=13>) and double click to install. Steps are as follows:



**Double - Click**



(NOTE: Before selecting USB, please make sure that the power supply of the machine is connected and the machine is turned on)

2. Choose USB Port.

DriverSetup

Model  
108Label

Language  
English

Port

☐ Com  115200  Xon / Xoff

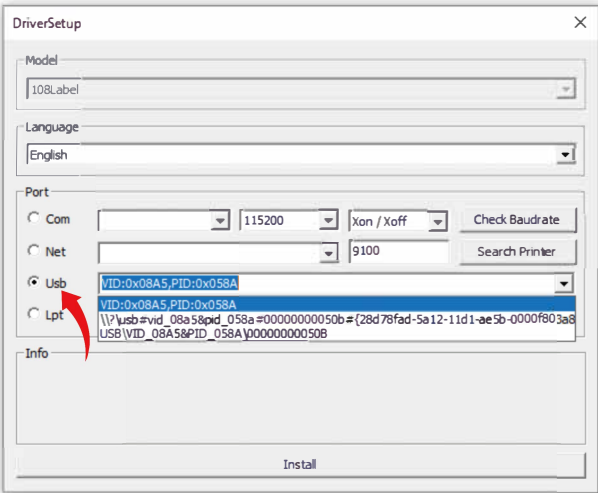
☐ Net  9100

☒ Usb

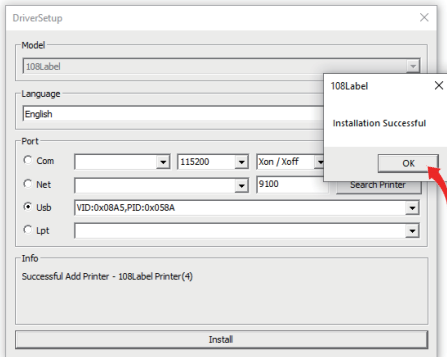
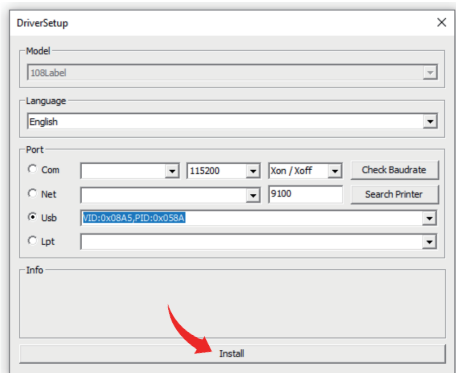
☐ Lpt

Info

Install



3. Click on the installation, display the "Installation Successful" can be.



## NOTE:

1.If you use PDF to print directly, you need to select the corresponding printer driver **108Label Printer,**

2.the paper size is selected according to the actual paper size used, set the number of copies,

3.click print.

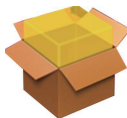
If the paper is inaccurate, press hold the machine button and hear "di" and "didi"

The machine automatically learns the paper type.

# Mac - Printer driver installation

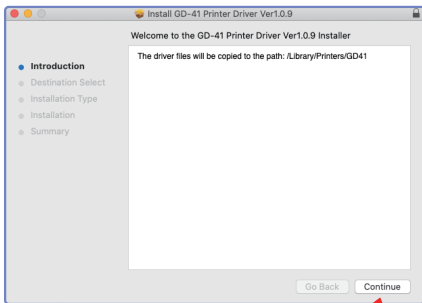
**Note:** Before installing the driver, the printer needs to be connected to the power supply and computer, and the power on state.

Download the installation file (<https://www.luckjingle.com/driver-Detail?id=13>) and double click to install. Steps are as follows:

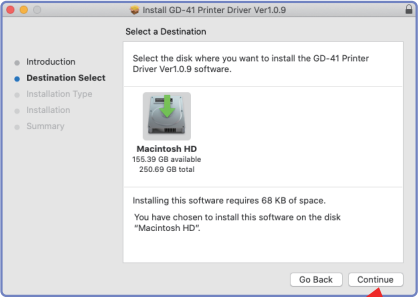


**GD-41/GD985 Printer Driver Ver1.0.9**

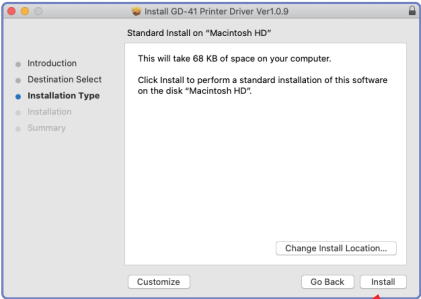
**Click to continue**



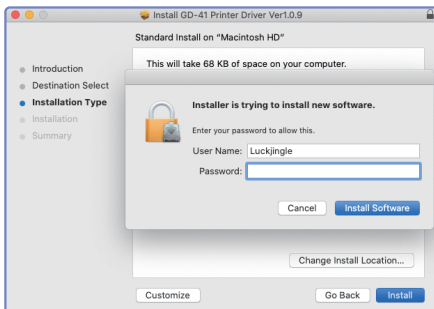
Click to continue



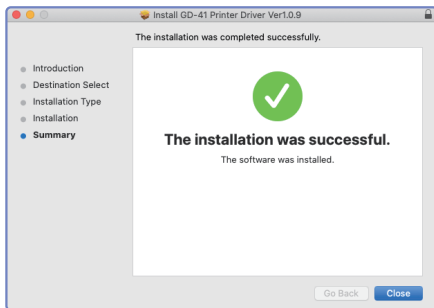
Click to install



## Input your password

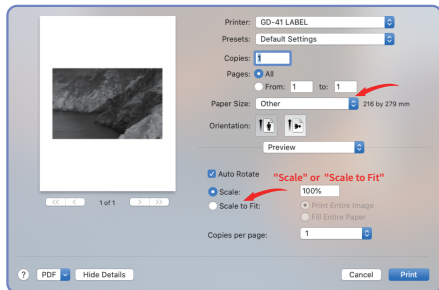


## Finish the installation

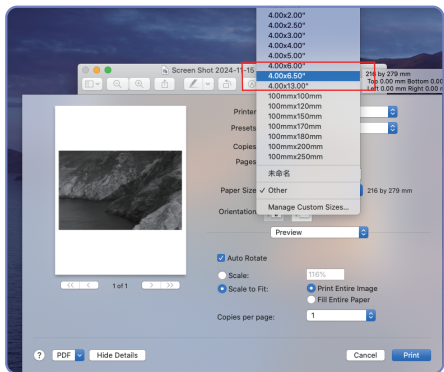


The driver installation is complete - select the correct size and printer when printing.

Select the file or picture you need to print—Choose correct size & correct printer name when printing.

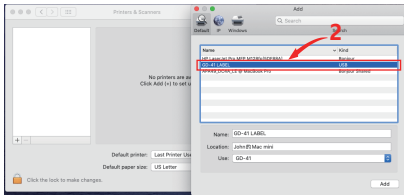
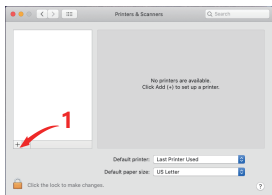


Click to select paper size



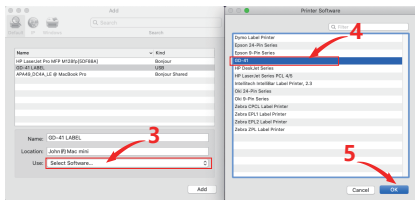
Setting Paper Size (NOTE: If the size you want is not available, you can customize the size.)

## If the GD-41/GD985 printer name is not found in the printer list, please manually add the printer

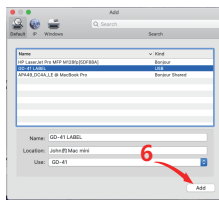


1.If the GD-41/GD985 printer name is not found in the printer list, click the "plus sign" in the bottom left corner

2.Find and select the name GD-41/GD985



3.Click on the red box area corresponding to "Use" to select the model, choose "GD-41", and click "OK"



4.Click "Add" to add the model

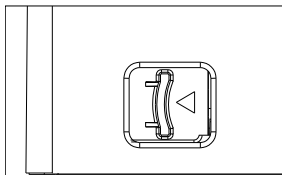
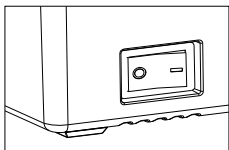
# APP CONNECTION

- Step 1: Turn the printer on;
- Step 2: Open the corresponding App on your mobile phone, then search for the printer. Tap Connect Printer in the Bluetooth list, and if the pairing dialog box appears, tap the OK button to pair and connect your phone's Bluetooth with the printer.
- Step 3: Select the paired printer in the device list.
- Notes:
  1. Only available for the machine with Bluetooth.
  2. Turn on phone Bluetooth for pairing.

# LABEL SETUP

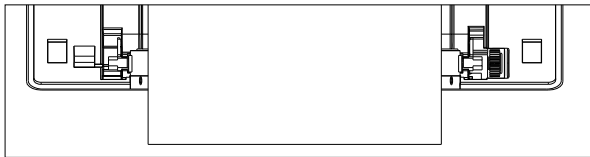
This printer is capable of working with many labels. Your printer must learn label properties prior to its initial use.

- > To initiate automatic label identification, please follow these steps:



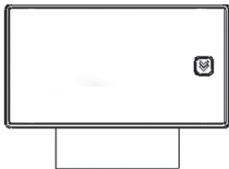
- > **1.** Turn the printer OFF

- > **2.** Press the side release button to open the cover

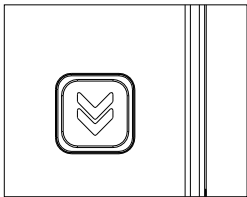


- > **3.** Load your label and make sure the purple guides are flush against the label. The label that you peel off should be facing up (toward the ceiling).

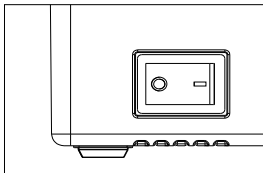
# LABEL SETUP



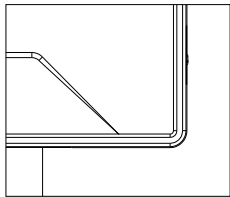
- **4.** Carefully close the cover.



- **6.** Press and hold the feeder button until you hear one beep.



- **5.** Turn the power ON and wait 5 seconds until the printer has initialized.



- **7.** The printer will start automatic label identification. From here on, you may simply feed in new labels from the back instead of opening the printer.

# LED Status

Light	Description	Troubleshoot
Green	Normal operation	
Flashing Red and Green	Printer head is overheated	Printer will automatically resume once the printer head has cooled down.
Flashing Red (every 2 seconds)	Paper shortage	Be sure that the printer paper is loaded correctly. You may need to run automatic label
Flashing Red (twice every second)	Cover is not closed	Check that the cover is completely closed.

# SPECIFICATIONS

Method	Direct Thermal
Resolution	203 dpi
Max Printing Speed	150 mm/s
Paper Width	48-110 mm
Paper Thickness	0.08-0.2 mm
Power Adapter	24 V / 2A
Printing Life	TPH 30 Km
Operating Environment	Temperature: -10 to 50 °C Humidity: 10-90% (non-condensing)
Storage Environment	Temperature: -40 to 80 °C Humidity: 5-95% (non-condensing)
Connection	USB
Weight	2.20 lbs / 1 kg
Dimensions	W100mm*D183mm*H92mm

# Maintenance

1. Turn the printer off, remove the power cord, and open the cover.
2. Wait until the printer head cools down.  
The printer head may be very hot after printing.
3. Completely clean printer head using an alcohol swap (not water).
4. Wait until the alcohol has completely vaporized, then close the cover.
5. Connect the power cord and print a test page to check if it is clean.

## NOTICE

Ensure power is off when performing maintenance.

Do not touch or scratch the printer head surface, roller, or sensors.

Avoid using gas, acetone, or other organic solvents.

## PRO TIPS

Anytime you change your label, run the automatic label identification. Press the button on the printer to get check-page on the printer to skip a blank label.

To run a self-test, press and hold the feeder button until you hear two short beeps.

Avoid using poor quality labels as they can damage the printer.

Regularly clean the printer head.

If paper is jammed, turn off the printer, and allow the printer head to cool down. Open the cover and ensure that the rubber is clean. If dirty, use alcohol to clean. Allow the area to dry off before turning the printer on.

Insert this printer into the same USB port on your computer every time. This will avoid creating duplicate copies of the printer in your operating system.

## SAFTY NOTICES

- The printer head can become very hot after printing labels. Do not touch the printer head.
- Do not bend the power cord excessively or place objects on the cord.
- Do not use the printer if you find any irregularities as these could result in fire or electrocution.
- Keep the printer out of reach of children.
- Use only approved accessories and do not try to disassemble or repair the unit by yourself
- Keep the printer away from water and other objects that could penetrate the components.
- Please unplug the printer when it is not in use for long periods of time.